

DRAWING NUMBER
55/192

PLAT NO. 2 ARBOR GLEN

A P.U.D.
MAY 1985 SHEET 2 OF 2

192

SUBDIVISION #
BOOK
FLOOD ZONE
QUAD #
SE
PUD NAME

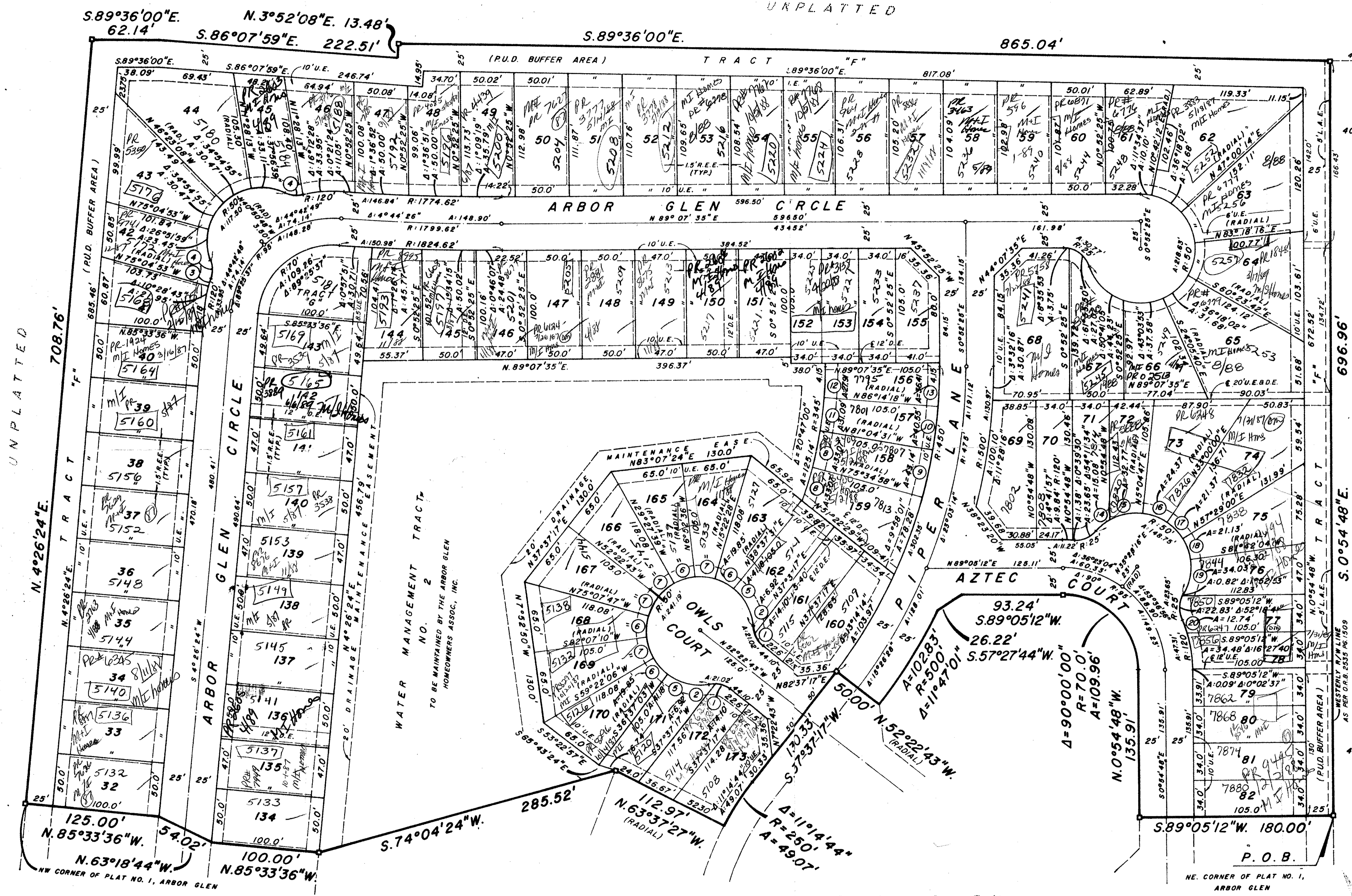
STATE OF FLORIDA
COUNTY OF PALM BEACH
This Plat was filed for record on
the _____ day of _____ 1985
and duly recorded in Plat Book _____
on Page _____
John E. Dunkle, Clerk Circuit Court

DRAWING NUMBER

DRAWING NUMBER

DRAWING NUMBER

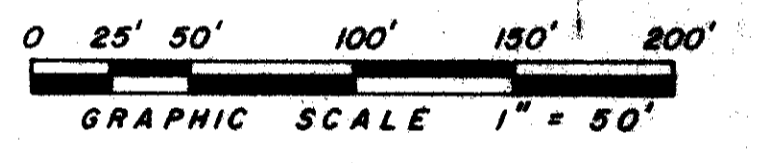
UNPLATTED



PINETREE DRIVE
P.B. 24, PG. 145

HAVERHILL ROAD
S.0°54'48"E. 696.96'

Subdivision # *Arbor Glen*
BOOK *55* PAGE *192*
FLOOD ZONE *B* FLOOD MAP # *190B*
QUAD # *34* ZONING *RS*
SE ZIP CODE *33463*
PUD NAME *Plat 2 485*



CURVE DATA

DELTA	RADIUS	LENGTH
1. 32°-19'-26"	25.00'	14.10'
2. 15°-54'-57"	25.00'	6.92'
3. 05°-43'-45"	120.00'	12.00'
4. 38°-48'-53"	25.00'	16.94'
5. 47°-11'-09"	50.00'	41.18'
6. 22°-45'-03"	50.00'	19.85'
7. 22°-45'-04"	50.00'	19.85'
8. 05°-29'-33"	345.00'	33.07'
9. 05°-29'-33"	450.00'	43.14'
10. 05°-09'-47"	450.00'	40.55'
11. 05°-09'-47"	345.00'	31.09'
12. 04°-38'-07"	345.00'	27.91'
13. 04°-38'-07"	450.00'	36.41'
14. 17°-16'-32"	50.00'	15.08'
15. 37°-33'-10"	50.00'	32.77'
16. 27°-55'-13"	50.00'	28.36'
17. 24°-29'-00"	50.00'	21.37'
18. 24°-13'-04"	50.00'	21.13'
19. 38°-59'-23"	50.00'	34.03'
20. 06°-05'-02"	120.00'	12.74'

0461-002
Pet. 85.15 collect

THIS INSTRUMENT WAS PREPARED BY KENT W. EWING, JR. IN THE OFFICE OF EWING AND SHIRLEY, INC. 3767 LAKE WORTH ROAD, SUITE 118 LAKE WORTH, FLORIDA 33461

EWING AND SHIRLEY, INC.
LAND SURVEYORS AND PLANNERS

3767 Lake Worth Road-Suite 118
Lake Worth Florida 33461
(305)968-0421

ADD BY *EP*
CHECKED BY *BT*

55/192

ARBOR GLEN PLAT NO. 2

PLAT NO. 1, ARBOR GLEN
P. B. 51 PG. 131